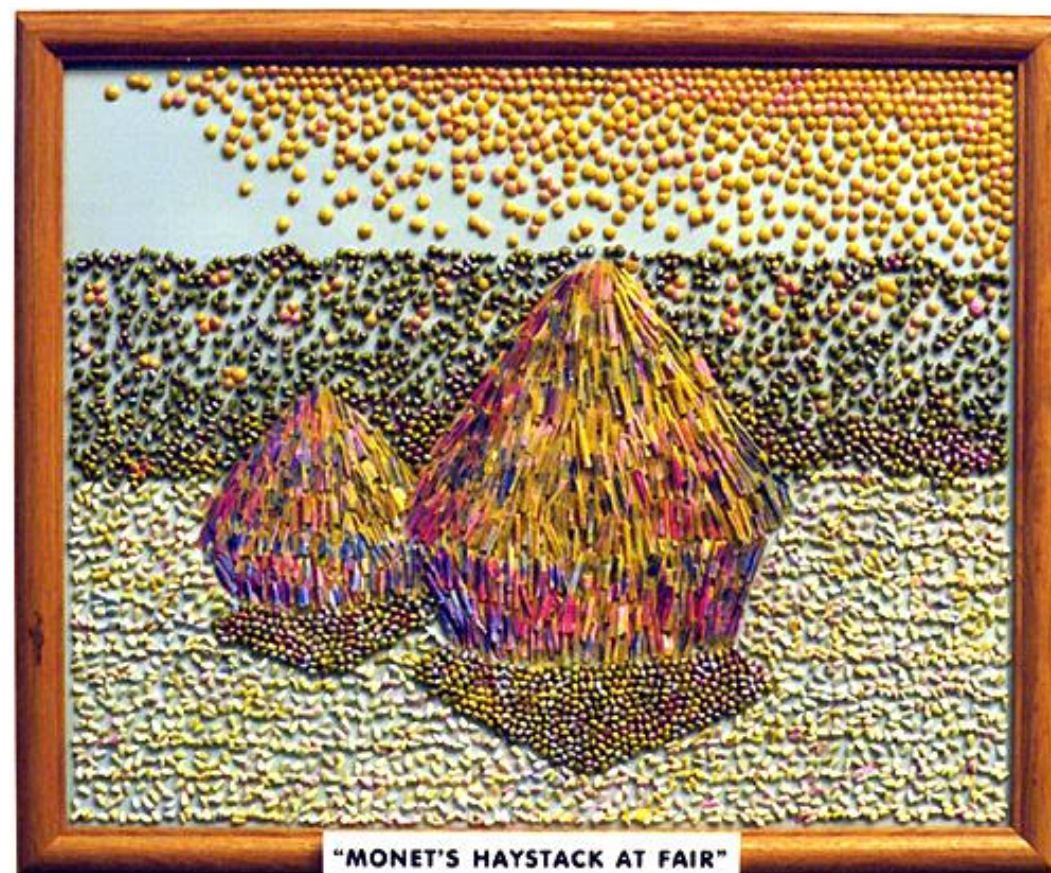
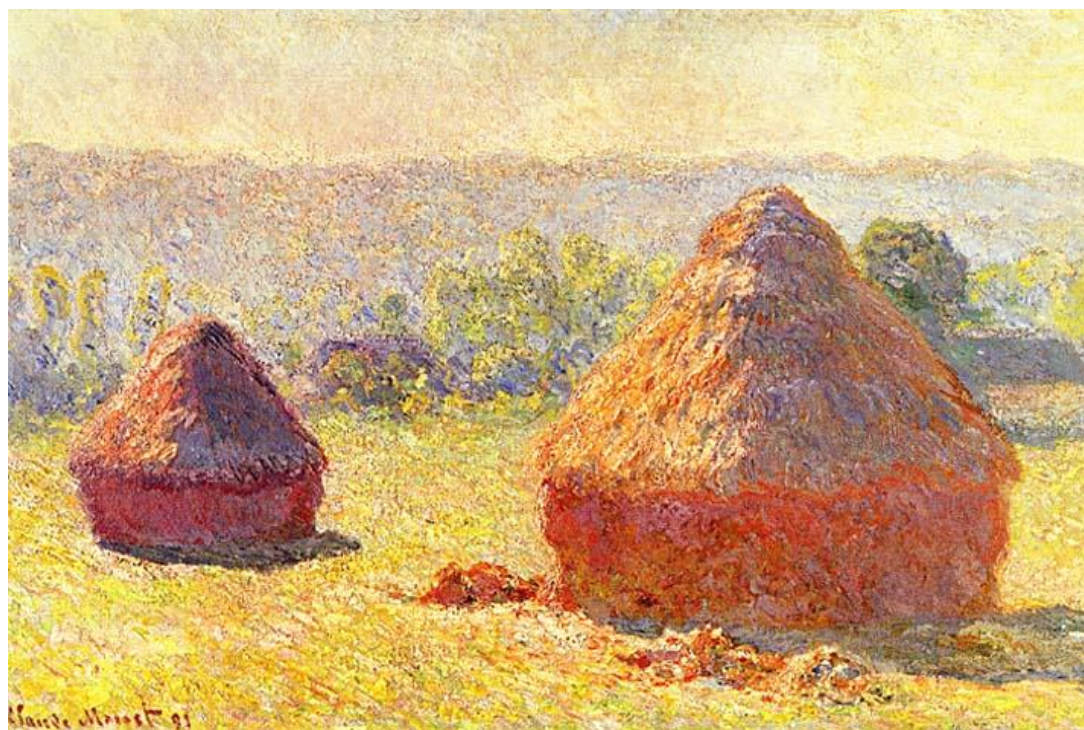


Interpreting fine works of art in seeds

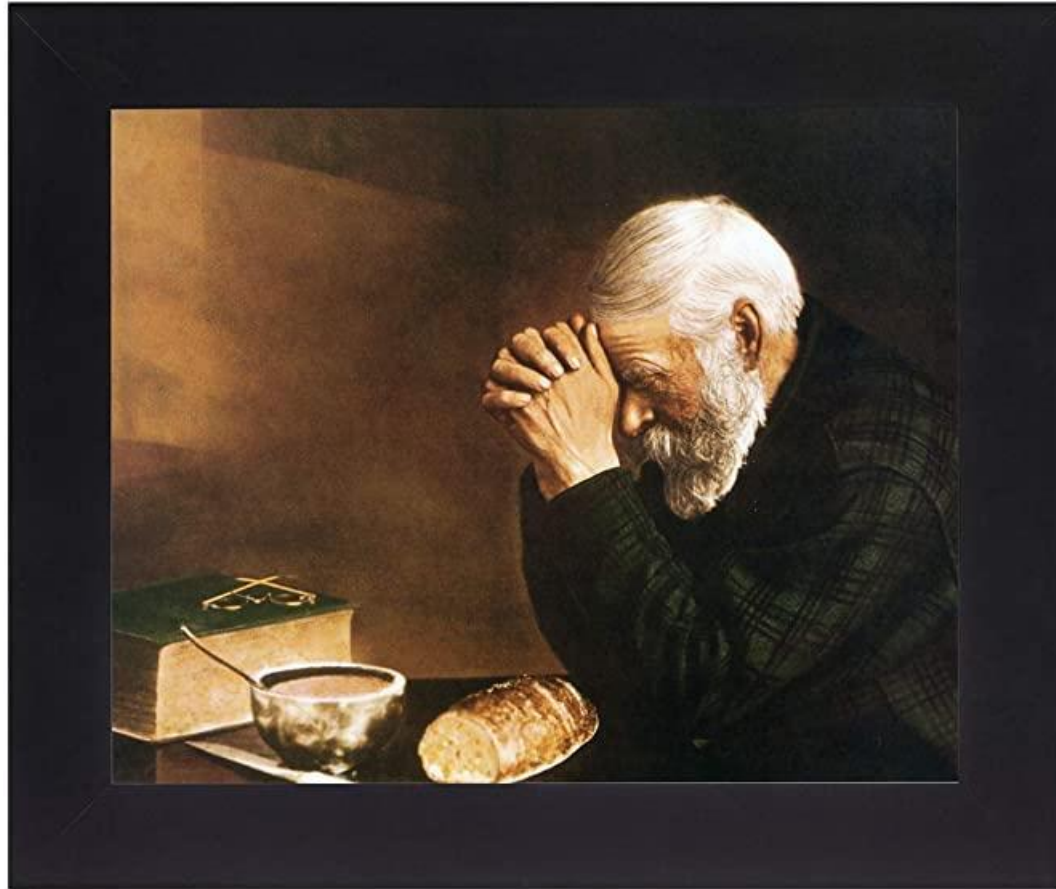


Monet's *Haystacks*



Kim Cope

Eric Enstrom's *Grace*



Kim Cope

Andrew Wyeth's *Christina's World*



Kim Cope

M.C. Escher's *Birds*



Joe Gagne

Vincent Van Gogh's *Sunflowers*



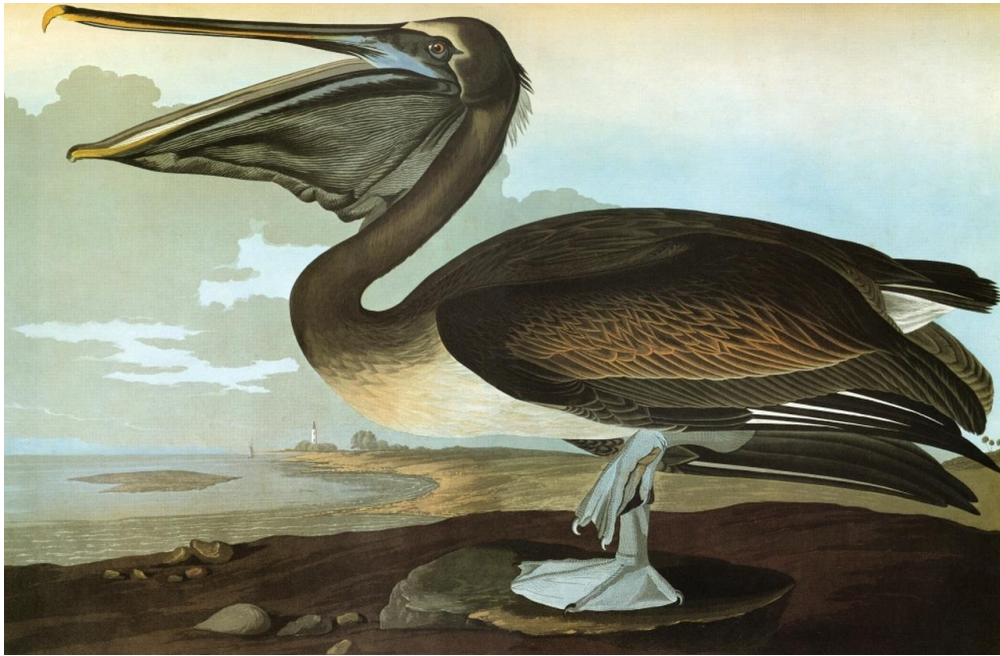
Delores Doroff

John James Audubon, *Curlew*



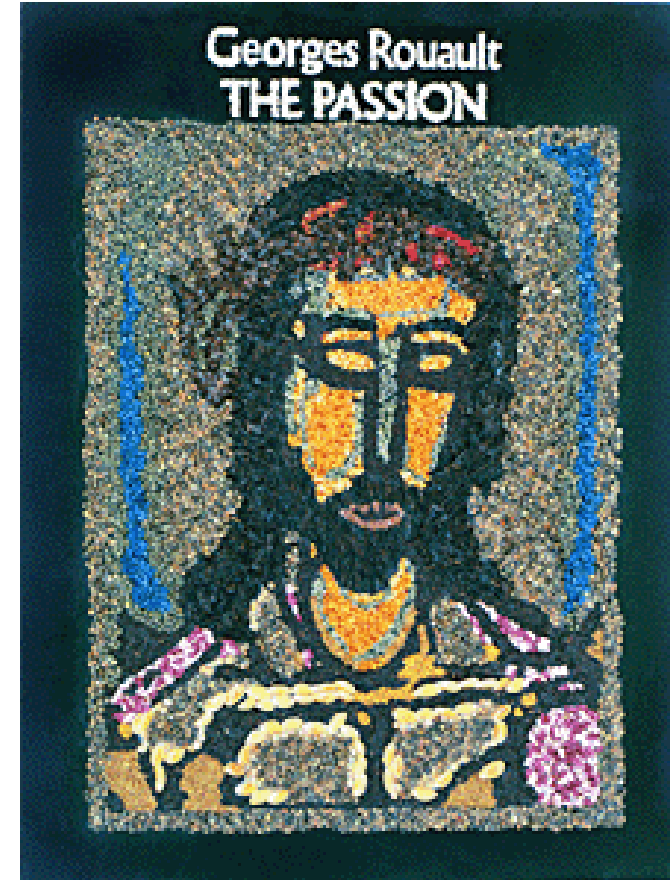
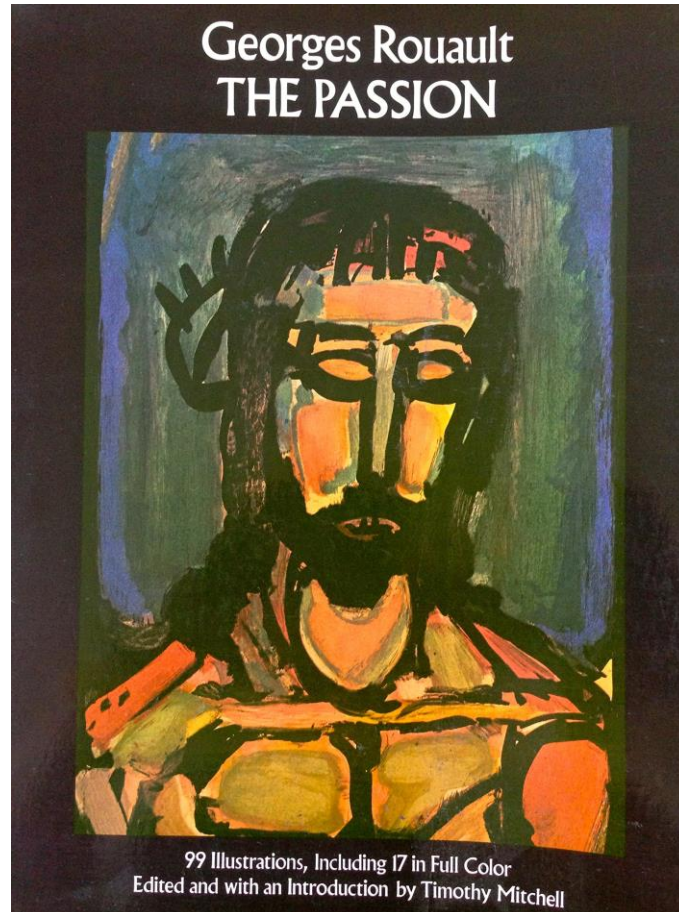
Delores Doroff

John James Audubon, *Pelican*



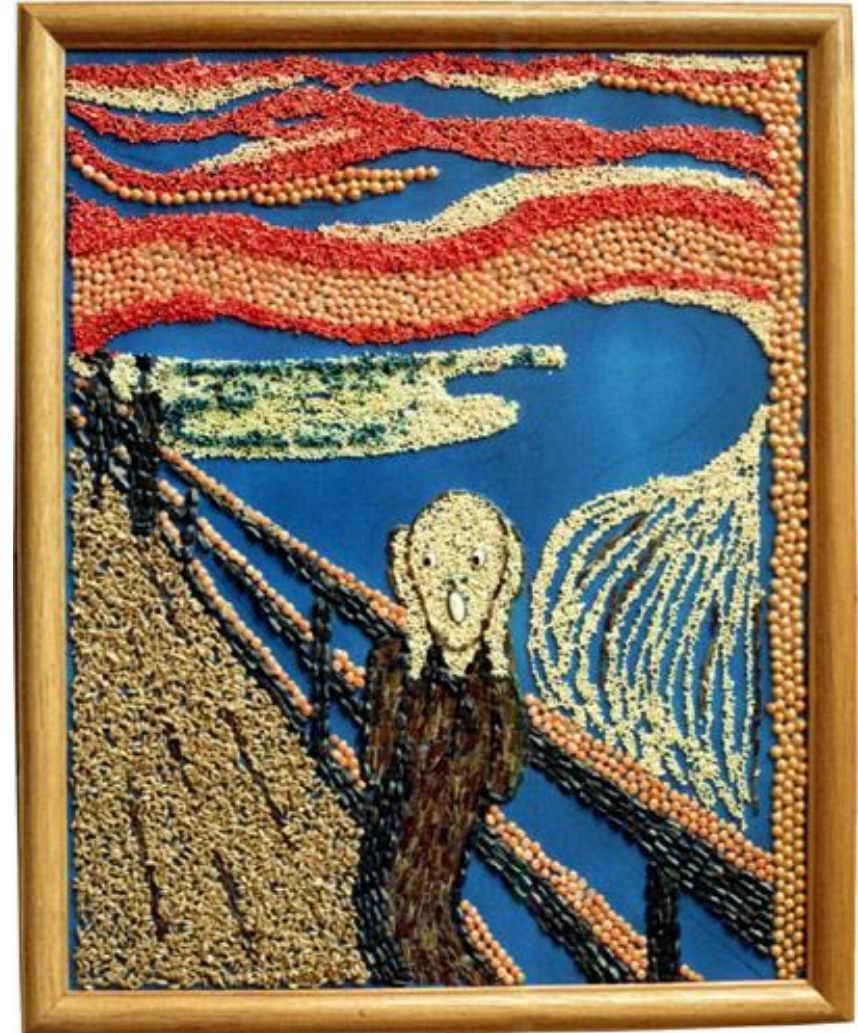
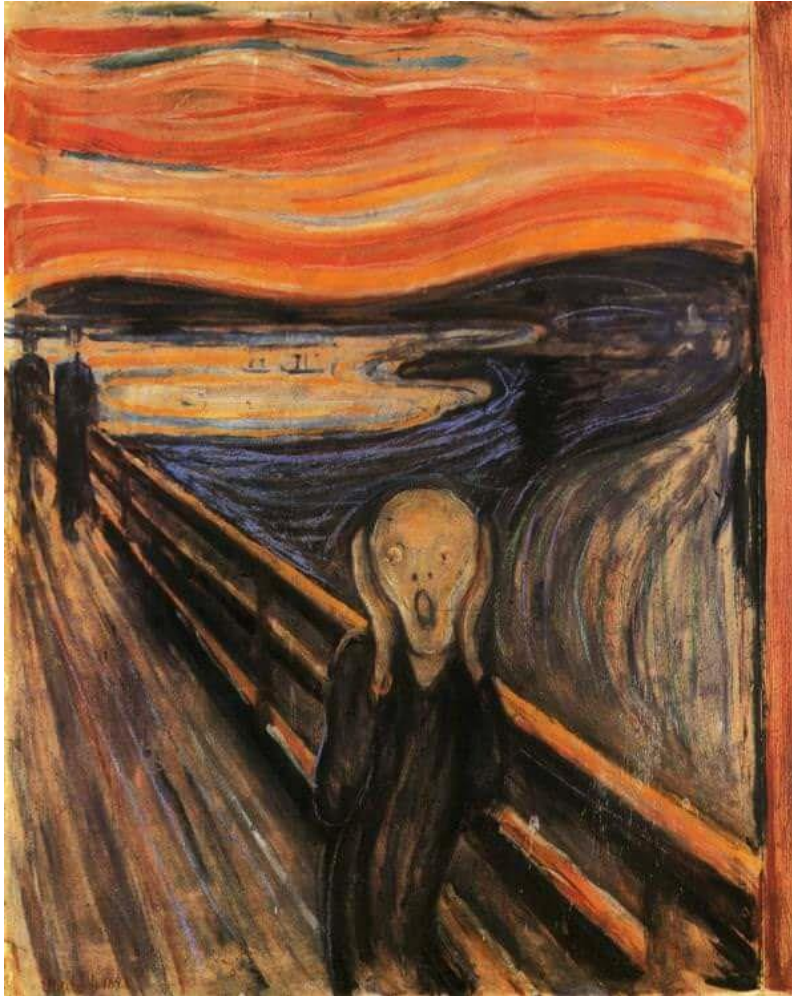
Delores Doroff

Georges Rouault's *The Passion*



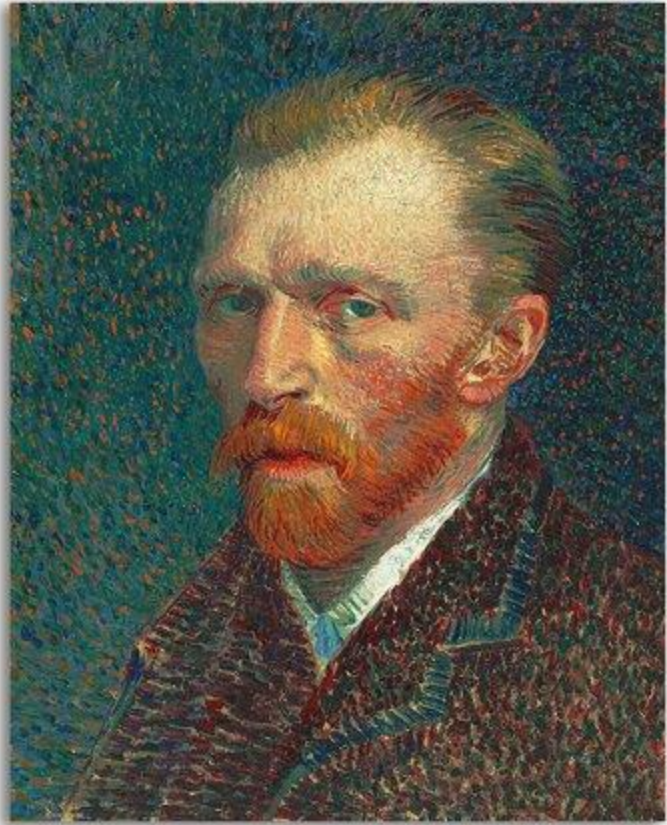
Steve Dahlberg

Edvard Munch's *The Scream*



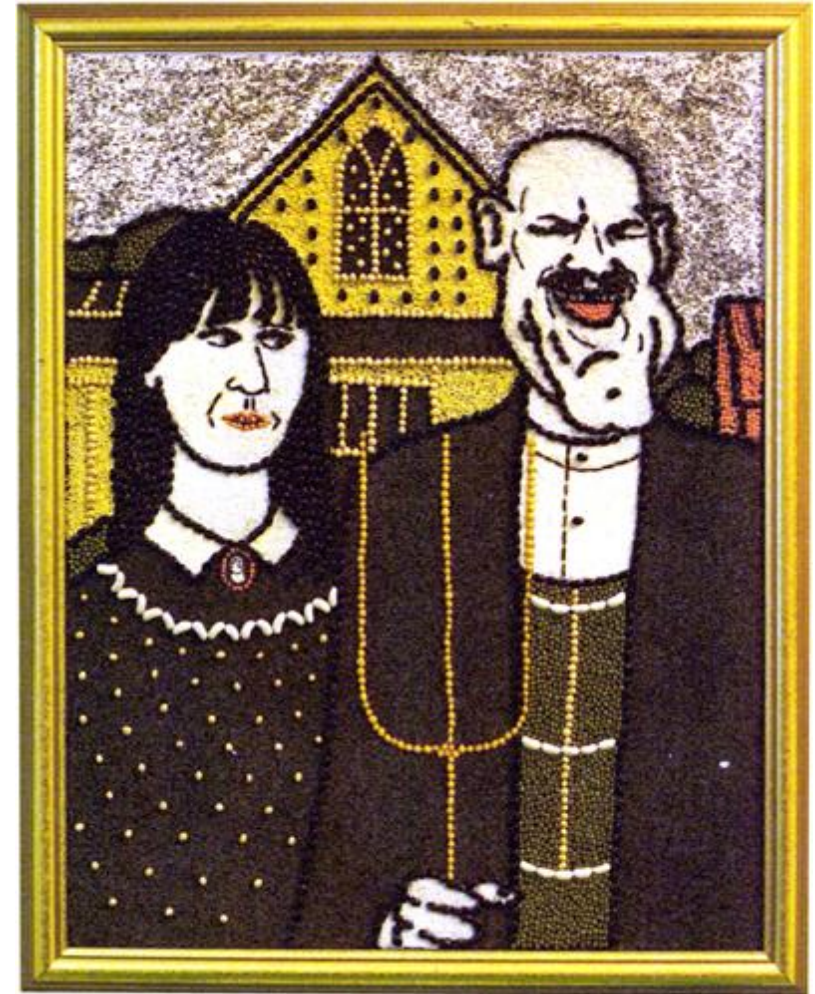
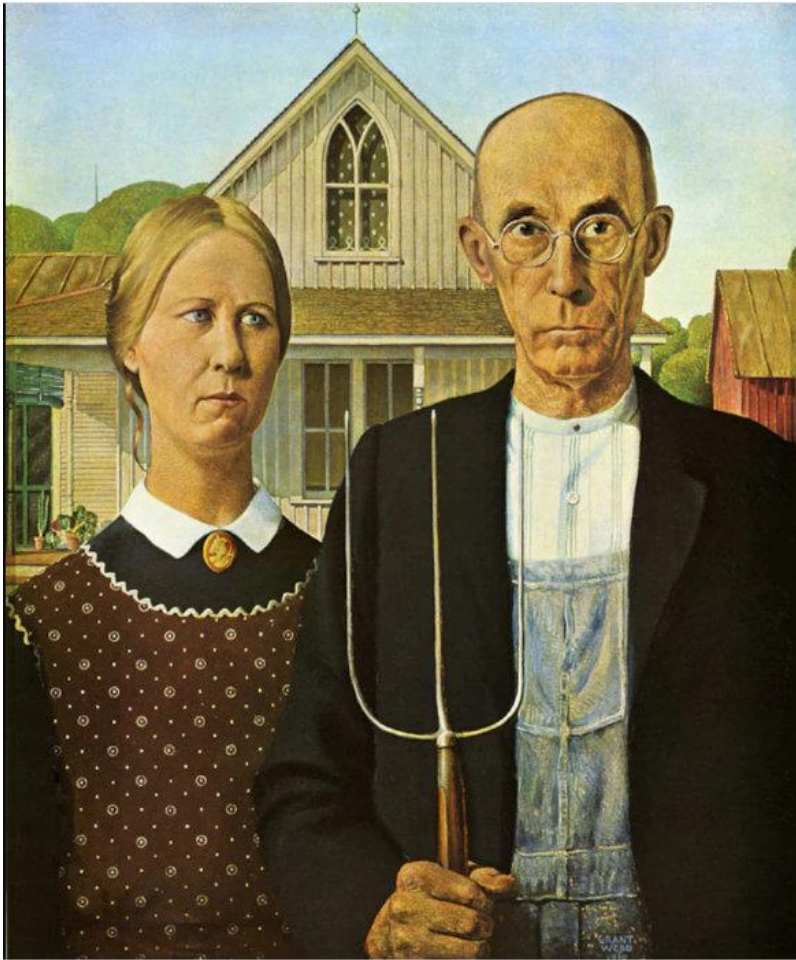
Kim Cope

Van Gogh's *Self Portrait*



James Buhler

Grant Wood's *American Gothic*



Kim Cope

Interpretation of Charley Harper's *Painted Bunting*



Suzanne Mears

Interpretation of Charley Harper's *Green Jay*



Suzanne Mears

Interpretation of Charley Harper's *Blackburnian Warbler*



Suzanne Mears

Interpretation of Charley Harper's *House Wren with Clothesline*



Suzanne Mears

Frida Kahlo

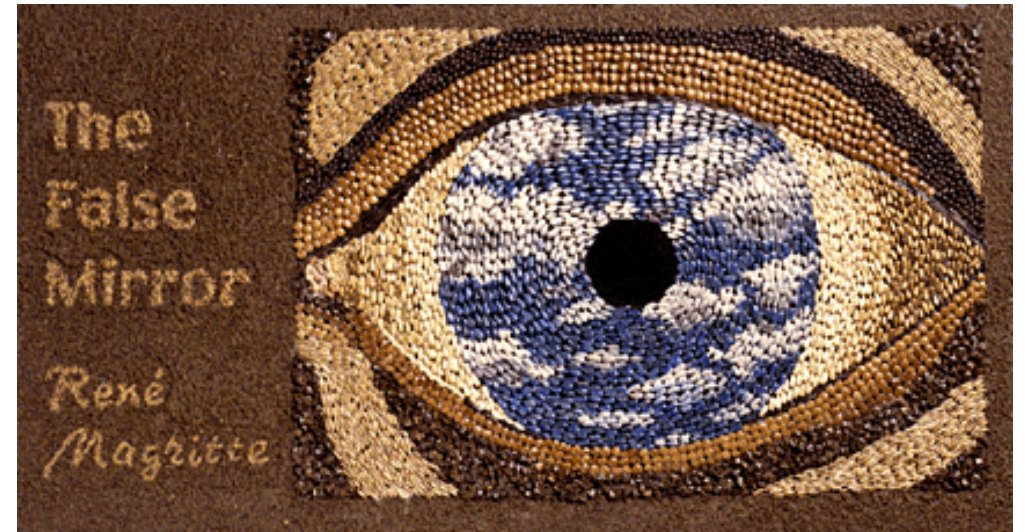
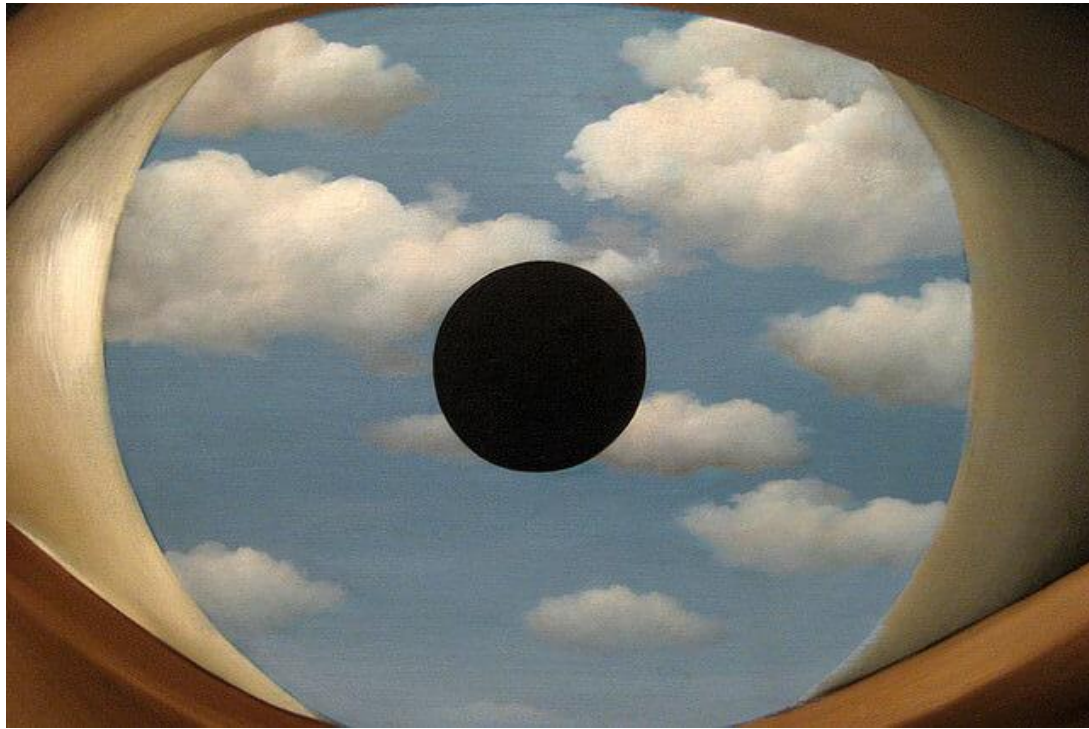


Elizabeth Schreiber



Cathy Camper

René Magritte's *The False Mirror*



Steve Dahlberg

Van Gogh's *Starry Night*



Kim Cope

Vermeer's *Girl with a Pearl Earring*



Candy Weaver